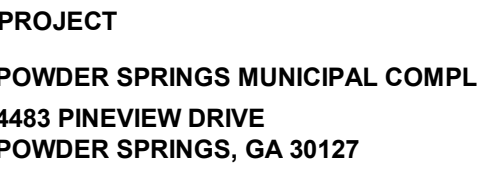




Furniture Schedule			
Type Mark	Manufacturer	Description	Finish
B-1	BERNHARDT DESIGN	PAUSE TWO SEAT BENCH - 60"W X 20"D X 17"H	
B-2	KIMBALL - NATIONAL	FRINGE BOOTH LOUNGE WITH PLINTH BASE TWO SEAT MID BACK 27"D X 47.5"D X 40.25"H	MAPLE WOOD FINISH, BERNHARDT TEXTILE WITH ELAN LEATHER
B-3	OFS	RIFF PIC-NIC BENCH WITH CUSHIONS AND SOLID HARDWOOD LEGS 46"W X 18"D X 20"H	GRADE 4 VINYL UPHOLSTERY
B-4	OFS	CAROLINA - 160 G2 BENCH WITH CLASSIC BUSHED ALUMINUM HARRIN LEGS 72"W X 24"D X 39.544"H	STANDARD OFS HPL SEAT WITH MATCHING PP EDGE AND PAINTED HARDWOOD LEGS AND GRADE 4 VINYL UPHOLSTERY CUSHIONS.
C-1	KI	OATH TASK CHAIR WITH ADJUSTABLE ARMS 26"W X 27"D X 39.544"H	GRADE 4 VINYL UPHOLSTERY
C-2	OFS	BALANCE SIDE CHAIR WITH HALF WOOD BACK 22.75"W X 22.63"D X 32.25"H	BLACK MESH WITH POLISHED ALUMINUM BASE AND GRADE 4 UPHOLSTERED SEAT
C-3	KI	OPT4 HIGH DENSITY STACK CHAIR WITH MESH SEAT AND MESH BACK AND SLED BASE. 19.3/4"W X 21.13"/D X 32.3/16"H	STANDARD WOOD VENEER WITH PALLAS PROSE AND GRADE 4 UPHOLSTERY
C-4	OFS	KASURA SWIVEL CHAIR HIGH BACK 29"W X 31"D X 47.5/1.5"H	BLACK MESH WITH BLACK POLY AND STANDARD METAL LEG FINISH
C-5	OFS	KASURA DINING CHAIR SINGLE MOLDED BACK AND SEAT FOAM 24.5"W X 24.5"D X 30.75"	5-PRONG SWIVEL STANDARD CASTERS WITH POWDER COATED BASE. VENEER WRAP FINISH, AND GRADE 4 UPHOLSTERY.
C-6	SOURCE FURNITURE	SKYE CLUB CHAIR STYLE 2 - 29"W X 32"D X 32"H	4 LEG WOOD BASE WITH METAL STRETCHER AND GRADE 4 UPHOLSTERY
C-7	OFS	CAROLINA - ANSEL LOUNGE CHAIR FULLY UPHOLSTERED WITH LOW BACK SINGLE TEXTILE 30"W X 33.75"D X 31.75"H	POWDER COATED ALUMINUM FRAME WITH DURAROPRE STRAP DETAIL AND GRADE 4 UPHOLSTERY CUSHIONS.
C-8	OFS	HARPIN MID BACK SWIVEL BASE ARMLESS WITH 3D MOLDED VENEER 19"W X 19.5"D X 32"H	STANDARD WOOD VENEER LEG WITH GRADE 4 UPHOLSTERY
C-9	OFS	CAROLINA - DESS LOUNGE CHAIR WITH METAL BASE 27"W X 29"D X 34"H	WALNUT VENEER SHELL WITH STANDARD POWDER COAT METAL BASE FINISH
C-10	OFS	MENTION MIDBACK LOUNGE CHAIR ARMLESS WITH WOOD SLED BASE 26.25"W X 30.5"D X 33.25"H	POWDER COAT METAL BASE WITH GRADE 4 FABRIC
C-11	HBF	SALON LOUNGE CHAIR WITH OPEN BACK 28.5"W X 3-.25"D X 29.75"H	STANDARD WOOD VENEER WITH GRADE 4 UPHOLSTERY
C-12	OFS	HARPIN LOW BACK GUEST SLED BASE MOLDED PLASTIC ONE-PIECE SHELL AND UPHOLSTERED SEAT 22"Wx22.5"Dx32"H	WALNUT WOOD WITH GRADE D UPHOLSTERY
C-13	SITONIT	MOVI STAG STOOL WITH FIXED LOOP ARMS 26"W X 26"D X 37.754"H	PLASTIC SHELL WITH POWDERCOAT METAL BASE AND GRADE 4 UPHOLSTERY
C-14	OFS	PUR CHAIR MID BACK SWIVEL 23.75"W X 24.5"D X 37.641.125"H	ONYX MESH WITH BLACK FRAME AND BLACK NYLON BASE WITH BLACK CARPET CASTERS WITH GRADE 4 VINYL FABRIC
C-15	HBFS	HARPIN MID BACK ARMLESS PLASTIC GUEST CHAIR 21.5"W X 22.25"D X 35.5"H	POLISH ALUMINUM FRAME, BLACK CASTERS, AND GRADE 8 UPHOLSTERY
C-16	SANDLER SEATING	MILANO COLLECTION OUTDOOR HIGH DENSITY STACKING SIDE CHAIR 20.9"W X 21.7"D X 31.5"H	MOLDED PLASTIC ONE-PIECE SHELL WITH POWDER COATED METAL BASE
C-17	OFS	LONA SWIVEL CHAIR HIGH BACK WITH HEADREST SINGLE TEXTILE AND RETURN TO CENTER SWIVEL BASE 29.5"W X 32"D X 38.5"H	GALVANIZED AND POWDER COATED METAL FRAME AND MICRO WELDED MESH.
C-18	LELAND INTERNATIONAL	EASE SIDE CHAIR 19.5"W X 21.7"D X 31"H	METAL BASE FINISH WITH GRADE 8 UPHOLSTERY
C-19	GLOBAL FURNITURE	LURAT UPHOLSTERED HIGH BACK TASK CHAIR 25"W X 26.5"D X 42.5"H	LELAND WOOD FINISH SEAT AND BACK WITH GANGING MECHANISM CHROME FRAME AND STANDARD GLIDE
C-20	SITONIT	MOVI LIGHT TASK CHAIR WITH FIXED LOOP ARMS 26"W X 26"D X 24.5/24.75"H	ALUMINUM ARMS WITH ABSOLUTE ARM CAP, ALUMINUM BASE, 2" BLACK CARPET CASTER, AND GRADE 4 VINYL UPHOLSTERY.
CR-1	OFS	MEETING ROOM 20.75" DEPTH BUFFET CREDENZA, 4 DOORS, 73.5" WIDTH, 36" HEIGHT	BLACK FRAME, BLACK NYLON BASE WITH BLACK CARPET CASTERS, MESH BACK, FIXED ARM, GRADE 4 VINYL FABRIC
CR-2	OFS	STAKS CREDENZA WITH RECTANGULAR WORKSURFACE PEDESTAL WIDE - BOX-BOX-FILE NO RISER SUPPORT 72"W X 22"D X 27.87"H	STANDARD HPL FINISH WITH MATCHING VENEER EDGE AND ERA PULLS
D-1	OFS	STAKS O-LEG DESK, RECTANGULAR WORK SURFACE, AND BOX/BOX/FILE PEDESTAL, 22"W X 46"D X 27.85"H, REFER TO TYPICALS PROVIDED IN ADDITIONAL INFORMATION DOCUMENT	STANDARD HPL FINISH WITH PARALLEL PULLS AND 1 LOCK CORE
D-2	OFS	STAKS VENEER LEG BASE DESK, RECTANGULAR WORK SURFACE, AND BOX/BOX/FILE PEDESTAL, 22"W X 78"D X 27.85"H, REFER TO TYPICALS PROVIDED IN ADDITIONAL INFORMATION DOCUMENT	HPL TOP WITH POWDER COATED METAL BASE
D-3	OFS	STAKS SOLID BASE LEG DESK, RECTANGULAR WORK SURFACE, AND BOX/BOX/FILE ORGANIZER WITH DOORS, 22"W X 78"D X 27.85"H, REFER TO TYPICALS PROVIDED IN ADDITIONAL INFORMATION DOCUMENT	HPS TOP WITH WOOD BASE
D-4	OFS	STAKS HEIGHT ADJUSTABLE DESK, RECTANGULAR WORK SURFACE, AND BOX/BOX/FILE PEDESTAL, 22"W X 78"D X 27.85"H, REFER TO TYPICALS PROVIDED IN ADDITIONAL INFORMATION DOCUMENT	HPL TOP WITH POWDER COATED METAL BASE
D-5	OFS	STAKS SOLID BASE LEG DESK EXECUTIVE, RECTANGULAR WORK SURFACE, AND BOX/BOX/FILE PEDESTAL, 22"W X 84"D X 27.85"H, REFER TO TYPICALS PROVIDED IN ADDITIONAL INFORMATION DOCUMENT	HPL TOP WITH HPL BASE
D-6	OFS	STAKS HEIGHT ADJUSTABLE DESK EXECUTIVE, RECTANGULAR WORK SURFACE, AND BOX/BOX/FILE PEDESTAL, 22"W X 85"D X 27.85"H, REFER TO TYPICALS PROVIDED IN ADDITIONAL INFORMATION DOCUMENT	HPL TOP WITH POWDER COATED METAL BASE
D-7	OFS	STAKS HEIGHT ADJUSTABLE DESK, RECTANGULAR WORK SURFACE, AND BOX/BOX/FILE PEDESTAL, 22"W X 85"D X 27.85"H, REFER TO TYPICALS PROVIDED IN ADDITIONAL INFORMATION DOCUMENT	HPS TOP WITH HPL BASE
D-8	OFS	STAKS WING PANEL DESK 80"W X 40"D X 27.87"H, REFER TO ADDITIONAL INFORMATION DOCUMENT.	HPL TOP WITH HPL BASE
D-9	OFS	STAKS VENEER LEG BASE DESK, RECTANGULAR WORK SURFACE AND BOX/BOX/FILE PEDESTAL, 60"W X 30"D X 27.87"H, REFER TO ADDITIONAL INFORMATION DOCUMENT	HPL TOP WITH WOOD BASE
D-10	OFS	STAKS HEIGHT ADJUSTABLE DESK, RECTANGULAR WORKSURFACE AND BOX/BOX/FILE PEDESTAL, 60"W X 30"D X 27.87"H, REFER TO ADDITIONAL INFORMATION DOCUMENT	HPL TOP WITH POWDER COATED METAL BASE
F-1	TBD	LATERAL FILES W/ DRAWERS - LATERAL FILE - 4 DRAWER - 30"W X 19.25"D X 53.25"H	POWDER COATED METAL FINISH
L-1	KI	RICKUS MOBILE LECTERN 30"W X 20"D X 28-42"H	STANDARD GRADE 1 LAMINATE WITH STANDARD METAL LEG FINISH
LK-1	HON	STORAGE LOCKERS WITH TOP 96"L X 18"D X 36"H DOUBLE STACK LOCKERS BELOW TOP WITH DIGITAL LOCKS.	STANDARD HPL FINISH
LP-1	OFS	STAKS MOBILE PEDESTAL BOX/FILE WITH CUSHION 15.63"W X 19.25"D X 20.47"H	STANDARD TFL FINISH WITH 1 LOCK CORE, PARALLEL PULLS, AND GRADE 4 CUSHION UPHOLSTERY.
S-1	KIMBALL - NATIONAL	COLLETTE 3 SEAT LOUNGE SOFA WITH SQUARE LEG AND STRAIGHT ARM 100"W X 35.25"D X 34.5"H	GRADE 6 UPHOLSTERY WITH STANDARD WOOD SELECTION FOR LEG
S-2	KIMBALL - NATIONAL	COLLETTE 2 SEAT LOUNGE SOFA WITH SQUARE LEG AND STRAIGHT ARM 70"W X 35.25"D X 34.5"H	GRADE 6 UPHOLSTERY WITH STANDARD WOOD SELECTION FOR LEG
S-3	SOURCE FURNITURE	MODERA SOFA - 88"W X 31"D X 33"H	SOLID DURABORD BACK OVER POWDER COATED ALUMINUM FRAME, AND GRADE 4 UPHOLSTERY CUSHIONS
SH-1	OFS	STAKS BOOKCASE 5 SHELVES, THREE ADJUSTABLE SHELVES AND TWO STATIONARY SHELVES 30"W X 14"D X 72.5"H	STANDARD HPL FINISH
TH-1	KI	PIROUETTE RECTANGULAR TRAINING T-BASE NESTING WORKSURFACE WITH 74P EDGE WITH CASTERS AND POLYESTER FELT MODESTY PANEL, 66"W X 24"D X 29"H	GRADE 1 LAMINATE WITH STANDARD LEG FINISH METAL TONE
T-2	OFS	NINETEEN20 SQUARE TABLE 30"W X 30"D X 29.68"H	STANDARD HPL TOP WITH PP EDGE AND SQUARE CORNER, DINING HEIGHT, AND POWDER-COATED LOW PROFILE DISK TABLE BASE.
T-3	OFS	MEETING ROOM CONFERENCE TABLE WITH RECTANGULAR TOP, LUMBER BANDED EDGE, AND PANEL BEAM BASES 192"L X 48"D X 28.75"H	STANDARD HPL TOP WITH POWDER CUTOUT AND VENEER PANEL BEAM BASES
T-4	OFS	CAROLINA - BASKET OCCASIONAL OVAL COCKTAIL TABLE 49"W X 27"D X 16"H	HPL TOP WITH POWDER COATED METAL BASE
T-5	BERNHARDT DESIGN	DIYMEN OCCASIONAL ROUND TABLE D03 19"W X 17"D X 18"H	HPL TOP WITH POWDER COATED METAL BASE
T-6	BERNHARDT DESIGN	DIYMEN OCCASIONAL ROUND TABLE D09 24"W X 24"D X 14.25"H	SOLID SIJAR WOOD WITH NON-MARRING GLIDES, BLACK GLAZE FINISH
T-7	BERNHARDT DESIGN	PLAYBOOK MEDIA TOP AND BASE ASSEMBLY, FREESTANDING CONFERENCE HEIGHT 84"L X 48.37"W X 29.5" H	SOLID SIJAR WOOD WITH NON-MARRING GLIDES, BLACK GLAZE FINISH
T-8	BERNHARDT DESIGN	CLUE OCCASIONAL ROUND DRUM TABLE R37 36.5"W X 36.5"D X 13.5"H	TWO 4-BASE WITH POWERTRACK, WOODGRAIN LAMINATE WITH PP EDGE, AND POWDERCOAT METAL BASE FINISH
T-9	HON	STORAGE ISLAND - JOINED CONFIGURATION 108"W X 36"D X 36"H, DOUBLE STACK LOCKERS BELOW ISLAND TOP WITH DIGITAL LOCKS AND OPEN SPACE WITH O LEG FOR SEATING FOR 2.	STANDARD OAK WOOD FINISH
T-11	OFS	NINETEEN20 ROUND TABLE TOP 48" DIAMETER X 29.68"H	STANDARD HPL FINISH
T-12	OFS	NINETEEN20 ROUND TOP TABLE, 36" DIAMETER X 29.68"H	STANDARD HPL TOP WITH PP EDGE, DINING HEIGHT, AND POWDER-COATED LOW PROFILE DISK TABLE BASE.
T-13	OFS	RIFF PIC-NIC TABLE DESK HEIGHT WITH SIX SOLID HARDWOOD LEGS 108"W X 42"D X 29"H	STANDARD HPL TOP WITH PP EDGE, DINING HEIGHT, AND POWDER-COATED LOW PROFILE DISK TABLE BASE.
T-14	SOURCE FURNITURE	SKY COFFEE TABLE ROUND 48" DIAMETER X 12"H	STADARD OFS HPL TOP WITH MATCHING PP EDGE AND HARDWOOD LEGS.
T-15	OFS	KINTRA VENEER COUNTER HEIGHT TABLE 120"W X 42"D X 36"H	POWDER COATED ALUMINUM FRAME WITH DURAROPRE STRAP DETAIL.
T-16	OFS	ELEVEN WOOD CONFERENCE TABLE 96"L X 42"W X 30"H	STANDARD VENEER FINISH
T-17	OFS	INTERMIKX CONFERENCE DESK WITH RECTANGULAR TOP 144"L X 48"D X 27.75"H	OFS STANDARD HIGH-PRESSURED LAMINATE TOP, FLAT EDGE, CENTER POWER CUTOUT FOR A SIX-12 AMP POWER OUTLET, AND POWDER COATED METAL LEG
T-18	OFS	INTERMIKX CONFERENCE DESK WITH RECTANGULAR TOP 192"L X 48"D X 27.75"H	SQUARE EDGE WITH STANDARD OFS HPL, POWDER CUTOUTS FOR 3 BASES BETWEEN 1ST AND 2ND BASE, AND POWDER COATED METAL LEGS STYLE CC-35MTB3 (2 QTY.) * CC-35MTB3C45 B/BASES
T-19	OFS	KINTRA TFL CONSOLE TABLE 46"W X 17"D X 29"H	SQUARE EDGE WITH STANDARD OFS HPL, POWDER CUTOUTS FOR 3 BASES BETWEEN 1ST AND 2ND BASE, AND POWDER COATED METAL LEGS STYLE CC-35MTB3 (2 QTY.) * CC-35MTB3C2 (2 QTY.)
T-20	OFS	KINTRA TFL COUNTER HEIGHT TABLE 96"W X 24"D X 36"H	STANDARD TFL FINISH
T-21	OFS	NINETEEN20 SQUARE OUTDOOR DINING TABLE 36"W X 36"D X 42"H	SQUARE EDGE TFL FINISH
T-22	OFS	ELEVEN WOOD COLLABORATIVE RECTANGULAR TOP WITH HPL, 60"W X 30"D X 30"H	SQUARE SOLID SURFACE TOP WITH SQUARE CORNER AND DINING-HEIGHT POWDER COATED METAL BASE.
T-23	SOURCE FURNITURE	MODERA LARGE RECTANGULAR DRINK RAIL 100"L X 18"W X 4.11"H	STANDARD HPL LAMINATE TOP WITH WITH MATCHING PP EDGE AND WOOD BASE.
T-24	OFS	NINETEEN20 RECTANGULAR DINING TABLE, 48"W X 30"D X 29.68"H	DURABORD TOP OVER POWDER-COATED ALUMINUM FRAME.
T-25	OFS	CAROLINA - BASKET OCCASIONAL ROUND COCKTAIL TABLE 43"W X 43"D X 16"H	HPL TOP WITH POWDER COATED METAL BASE
T-26	OFS	NINETEEN20 ROUND TOP TABLE, 30" DIAMETER X 29.68"H	HPL TOP WITH POWDER COATED METAL BASE
T-27	OFS	KINDRA TFL COUNTER HEIGHT TABLE 84"W X 24"D X 36"H	STANDARD HPL TOP WITH PP EDGE, DINING HEIGHT, AND POWDER-COATED LOW PROFILE DISK TABLE BASE.
WS-1	OFS	STAKS WORKSTATION SYSTEM WITH RECTANGULAR WORKSURFACE, ADJUSTABLE-HEIGHT BASE, AND MULTI-FILE PEDESTAL 2 BOX RIGHT/1 FILE LEFT/1 LATERAL FILE, 72"W X 228"D X 27.87"H, REFER TO ADDITIONAL INFORMATION DOCUMENT.	STANDARD TFL FINISH
WS-2	OFS	STAKS WORKSTATION SYSTEM WITH RECTANGULAR WORKSURFACE, H-LEG SUPPORT, DIVIDER WALL AND END PANEL, 73"W X 130"D X 27.87"H, REFER TO ADDITIONAL INFORMATION DOCUMENT.	STANDARD HPL TOP AND POWDER COATED METAL BASE WITH PARALLEL PULLS AND PP EDGE
WS-3	OFS	STAKS WORKSTATION SYSTEM WITH RECTANGULAR WORKSURFACE, VENEER LEG BASE, DIVIDER WALL PANELS, ORGANIZER WITH DOORS, PEDESTAL BOX/BOX/FILE, 72"W X 157"D X 27.87"H, REFER TO ADDITIONAL INFORMATION DOCUMENT.	STANDARD HPL FINISH AND POWDER COATED METAL BASE WITH PARALLEL PULLS
			STANDARD HPL TOP WITH VENEER LEG BASE AND PARALLEL PULLS

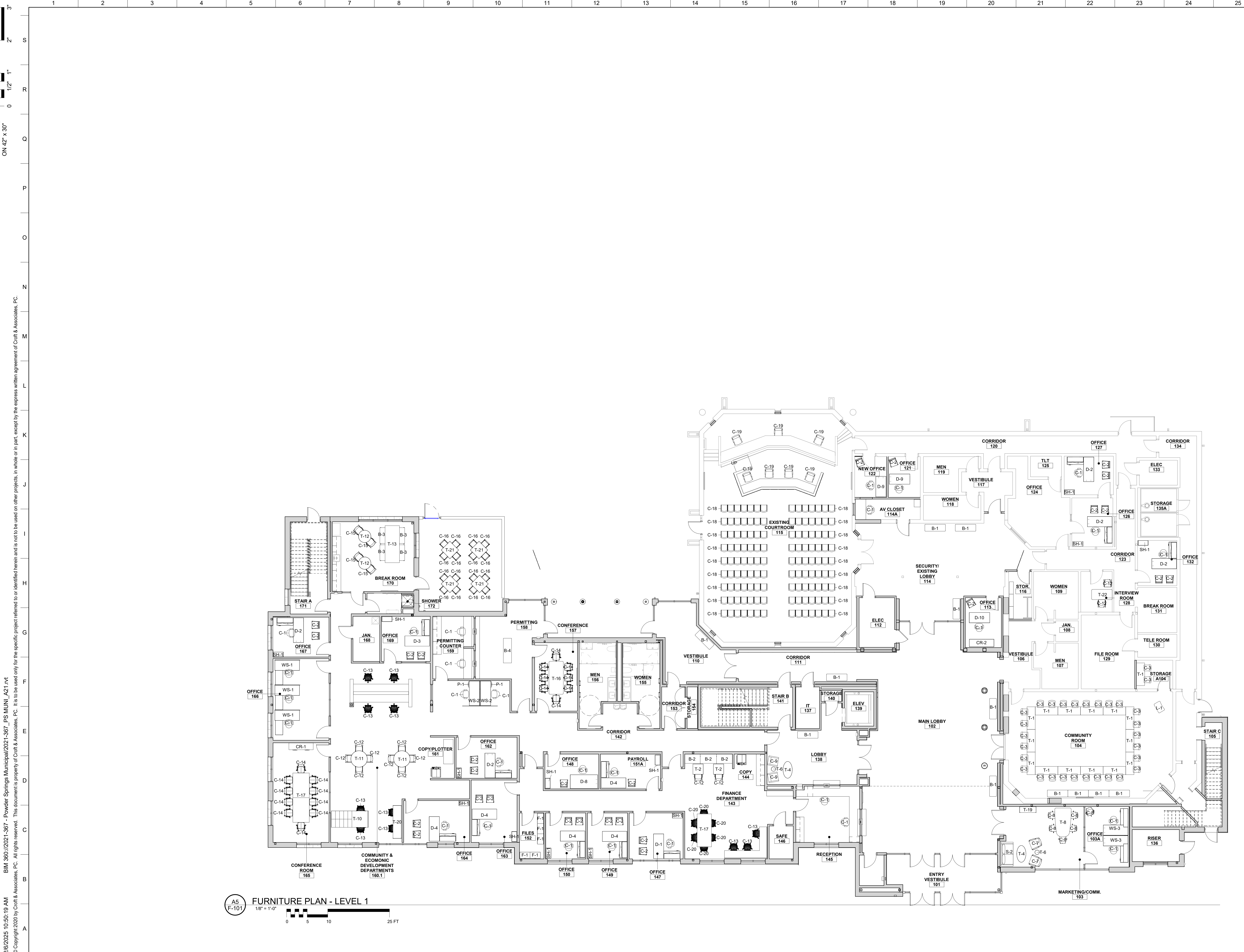


PROJECT NUMBER
2021-367

DRAWN: CHECKED:
TD/AA AA

SHEET TITLE
FURNITURE SCHEDULE

F-100



THIS SHEET PLOTS ON 42" x 30" 3" 2" 1" 1/2" 0" S R Q P O N M L K J I H G F E D C B A

2/6/2025 10:50:19 AM
BIN 360//2021-367 - Powder Springs Municipal/2021-367 PS MUNI_A21.rvt
© Copyright 2020 by Croft & Associates, PC. All rights reserved. This document is property of Croft & Associates, PC. It is to be used only for the specific project referred to or identified herein and is not to be used on other projects, in whole or in part, except by the express written agreement of Croft & Associates, PC.



Croft & Associates
3380 Blue Springs Road
Kennesaw, Georgia 30144
770.529.7714 (p) 770.529.7716 (f)
www.croftae.com



1642 Powers Ferry Road Southeast
Suite 250
Marietta, Georgia 30067
404.603.8833
www.macallanconstruction.com



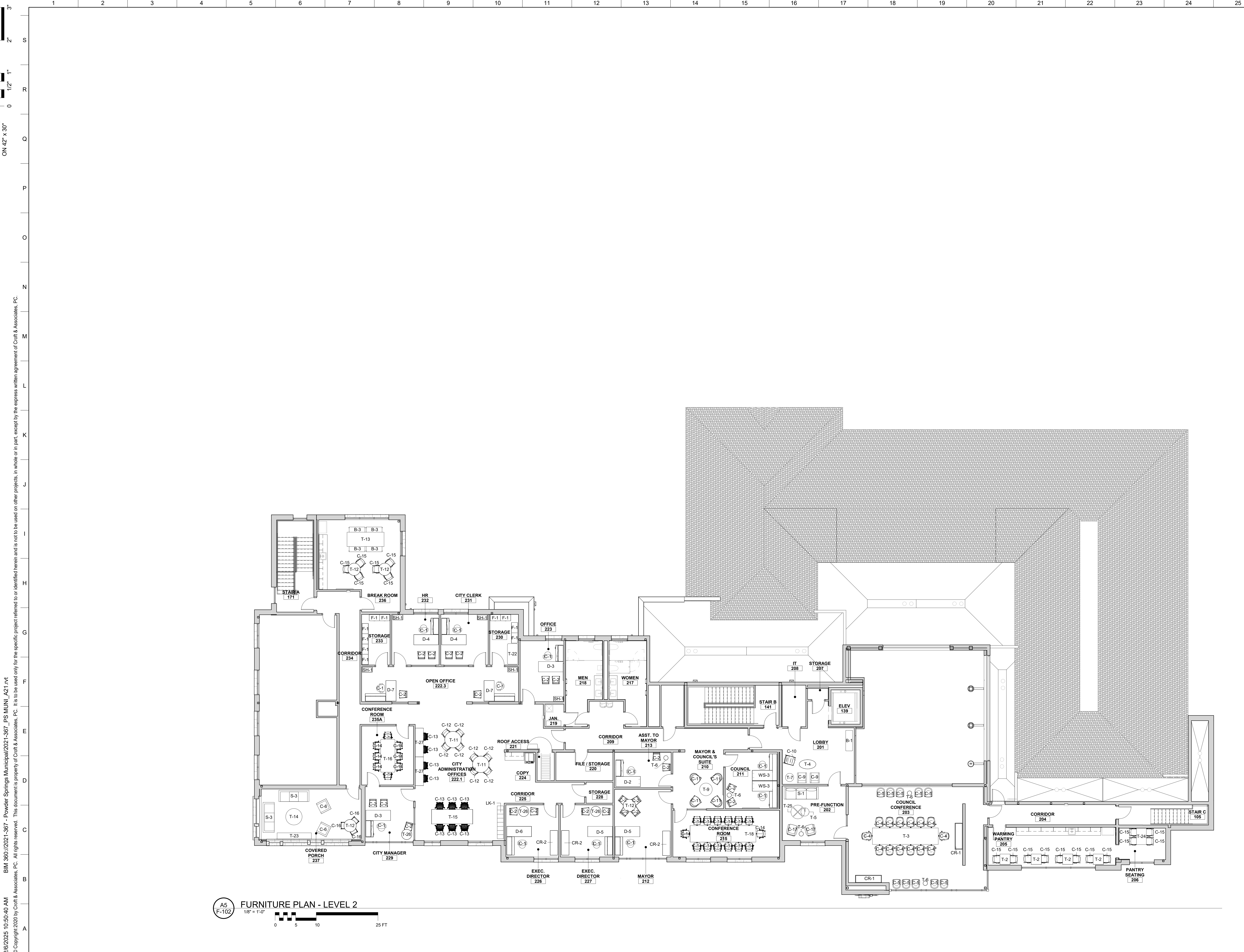
OWNER
THE CITY OF POWDER SPRINGS
4426 MARIETTA ST.
POWDER SPRINGS, GA 30127

PROJECT
POWDER SPRINGS MUNICIPAL COMPLEX
4483 PINEVIEW DRIVE
POWDER SPRINGS, GA 30127

No.	Date	Description
ISSUANCE		

PROJECT NUMBER
2021-367
DRAWN: TD/AA CHECKED: AA
SHEET TITLE
FURNITURE PLAN - LEVEL 1

SHEET NO.
F-101



2/6/2025 10:50:40 AM BIM 360://2021-367 - Powder Springs Municipal/2021-367 PS MUNI_A21.rvt
© Copyright 2020 by Croft & Associates, PC. All rights reserved. This document is property of Croft & Associates, PC. It is to be used only for the specific project referred to or identified herein and is not to be used on other projects, in whole or in part, except by the express written agreement of Croft & Associates, PC.

A5
F-102
FURNITURE PLAN - LEVEL 2
1/8" = 1'-0"
0 5 10 25 FT

CROFT

Croft & Associates
3380 Blue Springs Road
Kennesaw, Georgia 30144
770.529.7714 (p) 770.529.7716 (f)
www.croftae.com

MACALLAN
CONSTRUCTION
1642 Powers Ferry Road Southeast
Suite 250
Marietta, Georgia 30067
404.603.8833
www.macallanconstruction.com



OWNER
THE CITY OF POWDER SPRINGS
4426 MARIETTA ST.
POWDER SPRINGS, GA 30127

PROJECT
POWDER SPRINGS MUNICIPAL COMPLEX
4483 PINEVIEW DRIVE
POWDER SPRINGS, GA 30127

No.	Date	Description
ISSUANCE		

PROJECT NUMBER
2021-367
DRAWN: TD/AA
CHECKED: AA
SHEET TITLE
FURNITURE PLAN - LEVEL 2

SHEET NO.
F-102